



Built For Heavy Use

2014-2015 Enterprise Wi-Fi Networking Solutions



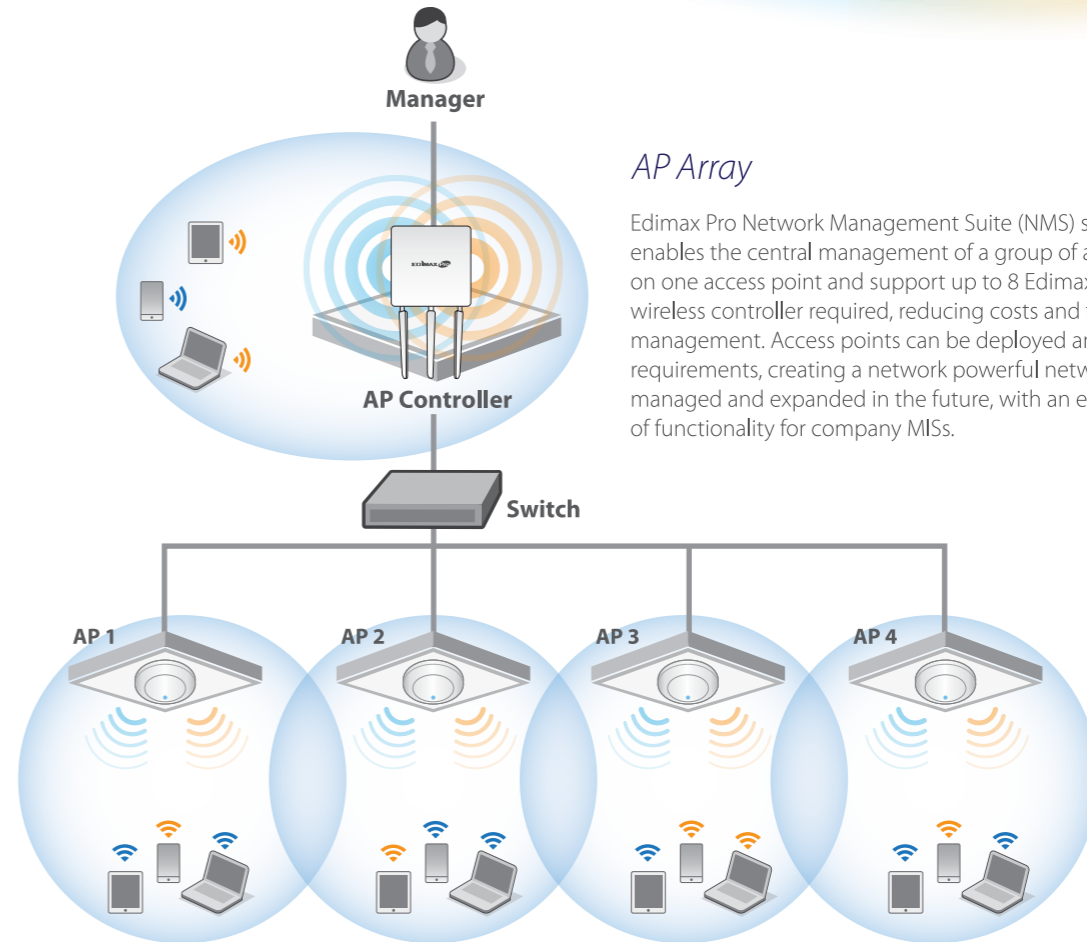
www.edimax.com



The Edimax Pro series is a range of high performance, reliable and affordable Wi-Fi solutions for modern businesses. Performance, functionality and usability designed for day-to-day enterprise environments – with leading 11ac technology, powerful security, flexible deployment and management options for company MIS departments. Suited for SMB environments including offices, hotels, meeting rooms, schools, campuses, hospitals, retail stores, cafes and others where performance and security are critical for your business.

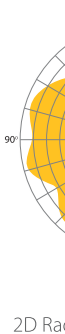
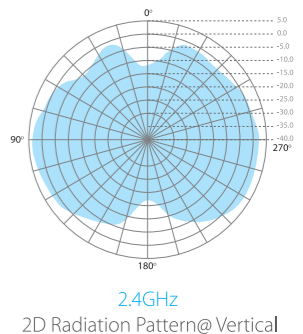
High Performance Design with High-Speed 1750Mbps Dual-Band 11ac

State-of-the-art IEEE 802.11ac wireless technology delivers the Giga-fast Wi-Fi speeds that today's fast-moving modern business environments demand. And simultaneous 2.4GHz & 5GHz dual-band coverage means maximum flexibility for mobile-centric business productivity applications. Speeds up to 450Mbps on the 2.4GHz band and 1300Mbps on the 5GHz band can handle even the most bandwidth intensive tasks, perfect for audio, video and voice applications and significantly faster than traditional 802.11n Wi-Fi. Additionally Edimax Pro series products feature other high-performance design features such as solid capacitors for significantly longer lifespans than traditional non-solid alternatives, generating less heat and delivering increased stability. Durable, robust and ready for business environments.



AP Array

Edimax Pro Network Management Suite (NMS) supports AP array architecture, which enables the central management of a group of access points. NMS can be installed on one access point and support up to 8 Edimax Pro access points with no additional wireless controller required, reducing costs and facilitating efficient remote AP management. Access points can be deployed and configured according to requirements, creating a network powerful network architecture which can be easily managed and expanded in the future, with an easy to use interface and a full range of functionality for company MISs.



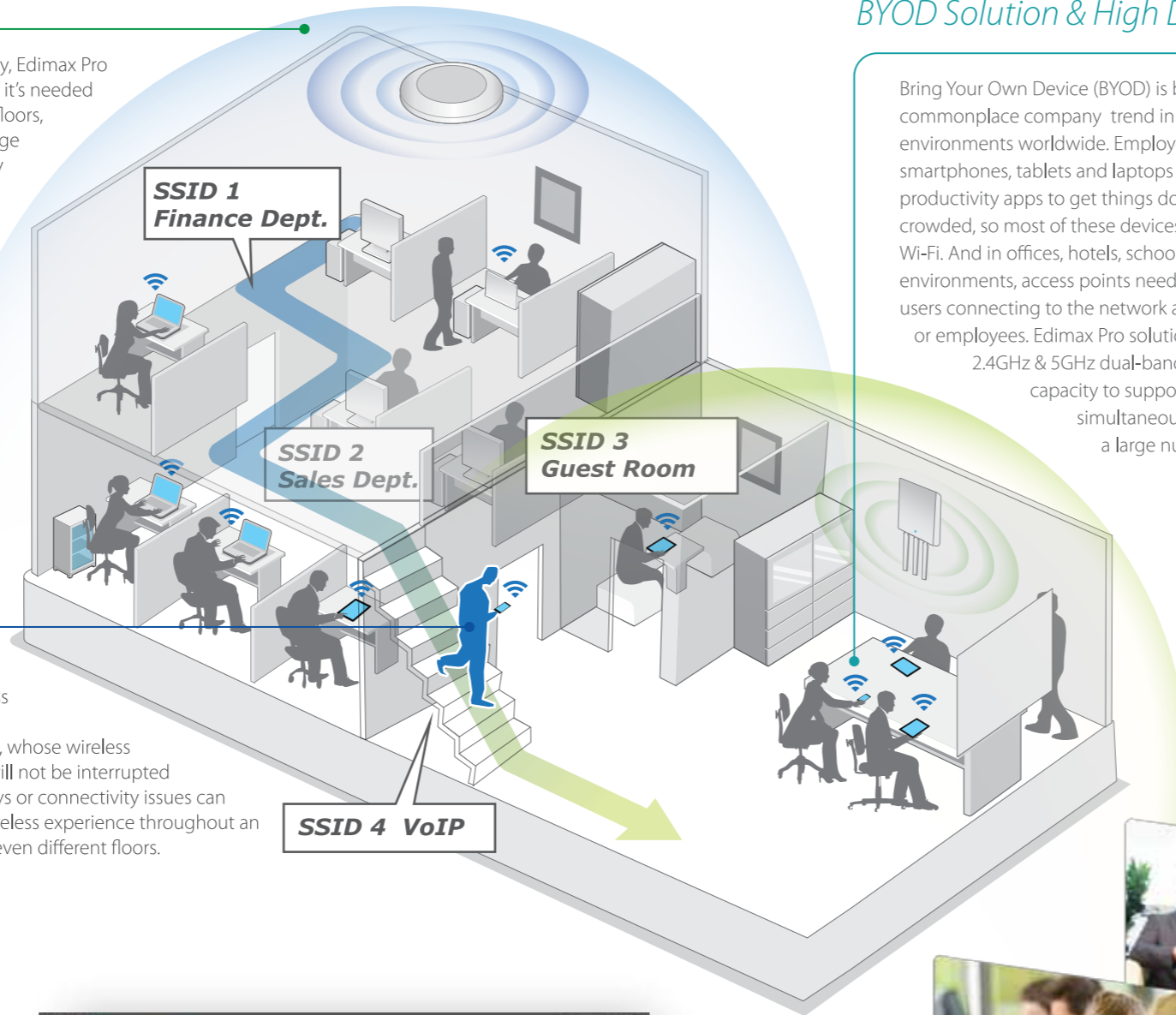
Wide Coverage & Multiple SSIDs

With adjustable RF output power and high receiver sensitivity, Edimax Pro access points are equipped to provide wide coverage where it's needed the most. Suitable for large spaces across office floors, shop floors, hospital wards, or conference rooms, get the wireless coverage that staff and systems need to operate efficiently. Keep every corner of your business connected and differentiate user groups, departments or guests with up to 32 separate SSIDs with independent security. Wide, accessible Wi-Fi coverage with strong security to protect sensitive company information and supervise access to internal networks.



Fast Roaming

Edimax Pro access points support fast roaming, meaning wireless devices can roam smoothly between multiple access points without the need to re-login. This minimizes network overheads and ensures best performance for wireless clients, whose wireless applications such as video streaming or voice applications will not be interrupted or delayed. Keeping devices connected is essential and delays or connectivity issues can be costly for businesses – fast roaming ensures a smooth wireless experience throughout an entire organization, across rooms, offices, departments and even different floors.



BYOD Solution & High Density Networking

Bring Your Own Device (BYOD) is becoming an increasingly commonplace company trend in offices and enterprise environments worldwide. Employees are using their own smartphones, tablets and laptops with the latest cloud-connected productivity apps to get things done and, traditional 2.4GHz is crowded, so most of these devices need or support high-speed 5GHz Wi-Fi. And in offices, hotels, schools or other densely populated environments, access points need to cope with a high volume of users connecting to the network at any time, whether it's customers or employees. Edimax Pro solutions support the latest 802.11ac 2.4GHz & 5GHz dual-band Wi-Fi along with high-density capacity to support up to a hundred users simultaneously, ideal for BYOD workplaces and a large number of wireless devices.



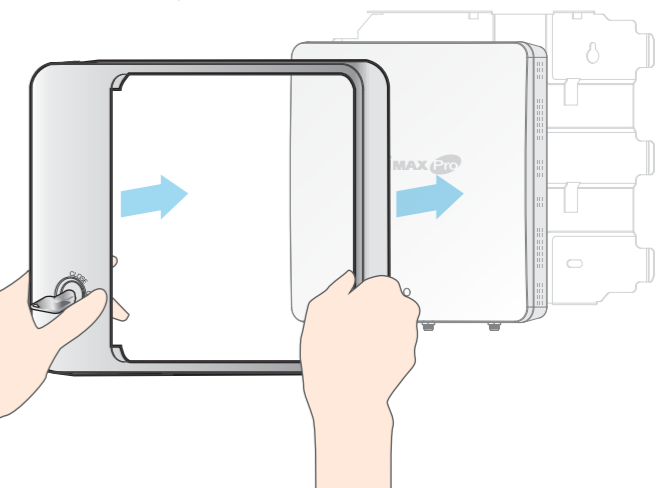
Easy and Intuitive Network Management Suite

Edimax Pro NMS (Network Management Suite) is a web-based wireless network management system. Company MIS departments can plan and manage Edimax Pro access points' powerful functionality according to their office space using an easy, remote web-based interface which includes a dashboard, map view, traffic statistics and wireless client list for network-wide remote administration. RADIUS settings, WLAN group settings, access control, guest network settings and firmware upgrades can all be managed centrally from a single location to reduce network downtime, aid troubleshooting and optimize network performance. Zone plans and setup wizards are also available for expanding and managing large networks with multiple access points.



Security Cover, Rogue AP Detection & Wireless Isolation

Network security is a critical concern for any modern business and begins with the hardware itself. Edimax Pro access points can be fitted with a robust security cover and lock, preventing the access point from being tampered with or removed and restricting access to authorized persons only. Rogue access point detection can also identify any unauthorized SSIDs which may have been installed in an otherwise secure network with malicious intent, and L2 wireless isolation provides wireless security.

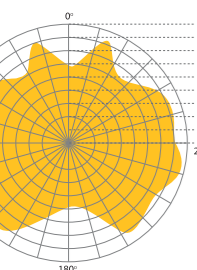


Seamless Mobility

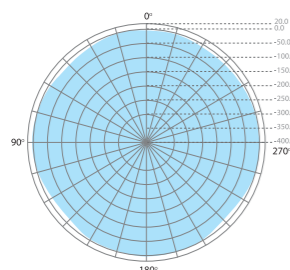
Typical wireless access points can effectively cover a 25m – 30m radius under normal usage. Now with the technological advances in Edimax Pro access points, we can extend effective coverage approximately 1.5x further, eliminating Wi-Fi dead zones completely and providing blanket coverage across enterprise environments. Wireless devices can stay seamlessly connected in environments where connectivity may be a critical component of efficiency and productivity, and benefit from mobility with high-speed connectivity across a range of wireless devices: smartphones, tablets and computers, throughout an entire organization.

Hotels, Offices, Schools, Hospitals

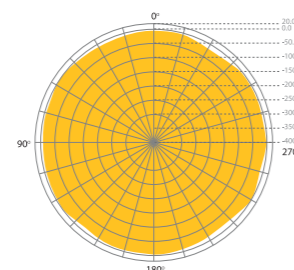
Edimax Pro series access points, with high-speed 11ac high-density networking for up to 100 simultaneous users, are ideal for multi-tenant unit buildings, hotels, resorts, hospitals, campuses, conventions or anywhere with large-scale network use, with safety and effectiveness guaranteed. UL94-5VB certified products are fire-resistant to international requirements and can be safely installed in plenum spaces – commonly used in industrial environments to house computer and network infrastructure – without presenting a risk.



5GHz Radiation Pattern@Vertical



2.4GHz Radiation Pattern@Horizontal



5GHz Radiation Pattern@Horizontal



	CAP300	CAP1200	WAP1200	WAP1750
Description	2 x 2 N Ceiling-Mount PoE	2 x 2 AC Dual-Band Ceiling-Mount PoE	2 x 2 AC Dual-Band Wall-Mount PoE	3 x 3 AC Dual-Band Wall-Mount PoE
Hardware				
LAN Interface	Giga x 1	Giga x 1	Giga x 2	Giga x 2
PoE	802.3af (Supports 802.3at)	802.3af (Supports 802.3at)	802.3at (in)/802.3af (out)	802.3at (in)/802.3af (out)
Antenna	Type: 2 x Built-In PIFA Gain: 2.82dBi max.	Type: 4 x Built-In PIFA (2 x 2.4GHz, 2 x 5GHz) Gain: 2.82dBi (2.4GHz) 4dBi (5GHz) max.	Type: 2 x External Gain: 2dBi (2.4GHz), 2dBi (5GHz)	Type: 3 x External Gain: 2dBi (2.4GHz), 2dBi (5GHz)
Power	DC : 12V / 1A 802.3af (PoE Injector Optional)	DC : 12V / 1A 802.3af (PoE Injector Optional)	DC : 12V / 2.5A (Exclude POE-out)	DC : 12V / 4A 802.3at (PoE Injector Optional)
Dimensions (L x W x H)	17.6 (D) x 3.2 (H) cm	17.6 (D) x 3.2 (H) cm	18.3 x 18.3 x 3.6 cm	18.3 x 18.3 x 3.6 cm
Weight (g)	287.3g	305.7g	527g	560g
Power consumption(Full Loading)	6.5W	11W	12W (Without PSE)	15W (Without PSE)
Mounting	Ceiling	Ceiling	Wall / Desktop	Wall / Desktop
Console	-	-	RJ45	RJ45
WPS/Reset	Reset	Reset	WPS/Reset	WPS/Reset
LED Indicator	1. Power LED 2. Diag LED			
Environmental Conditions	Operating Temperature: 0°C (32°F) to 50°C (122°F) Operating Humidity: 90% or Less			
Power Saving	UL94-5VB Flammability Rating	UL94-5VB Flammability Rating	-	-
Internal Buzzer	802.3az v			
Security Cover	-	-	v (Optional)	v (Optional)
Wireless				
Standard	802.11 b/g/n	802.11 a/b/g/n/ac Concurrent Dual-Band	802.11 a/b/g/n/ac Concurrent Dual-Band	802.11 a/b/g/n/ac Concurrent Dual-Band
No. of Radios	1	2	2	2
Max. Output Power (dBm)	2.4GHz: 26dBm	2.4GHz: 26dBm 5GHz: 26dBm	2.4GHz: 27.5(±2)dBm 5GHz: 27.5(±2)dBm	2.4GHz: 27.5(±2)dBm 5GHz: 27.5(±2)dBm
Receiver Sensitivity	≤ -95dBm	≤ -95dBm	≤ -94dBm	≤ -94dBm
Transmit Power (mW)	400mW	400mW/400mW	400mW/400mW	560mW/560mW
Certification	CE/FCC v			
Fast Roaming	v			
Number of SSIDs (2.4GHz/5GHz)	16 + 0	16 + 16	16 + 16	16 + 16
Performance				
Maximum Data Speed	300Mbps	300 + 867Mbps	300 + 867Mbps	450 + 1300Mbps
Concurrent Clients	Up to 50	Up to 50 Per Radio	Up to 50 Per Radio	Up to 50 Per Radio
Security				
Encryption	WEP / WPA / WPA2 v			
Wireless L2 Isolation	v			
Station Isolation	v			
IEEE 802.1x Authenticator	v			
EAP Authentication	EAP-FAST/EAP-SIM/EAP-AKA v			
Hidden SSID	v			
MAC Address Filter	v			
Wireless STA	v			
Rogue AP Detection (w/ NMS)	v			
Software				
Wireless Mode	AP / WDS AP / WDS Bridge v			
802.1q VLAN	Y (MD = 1-4094) v			
Spanning Tree	RSTP v			
QoS	WMM (802.11e) Max Associated Station No. v			
Pass-Through DSCP (802.1p)	IPv6 and VPN (PPTP, L2TP/Ipsec) v			
Multicast Rate up to 54Mbps	v			
Management				
Deployment	Standalone Managed by Edimax Pro NMS v			
Configuration	HTTP/HTTPS SNMP v1, v2c, v3 CLI (Telnet, SSH) v			
RADIUS Server	Build-In v			
Auto-Channel	v			
Private MIB	v			

NMS Management	
NMS Interface	Web
Supports Managed AP	8
Management Protocol	CAPWAP-like
NMS Information	
Dashboard	v
Map View	v
Managed AP Information	v
WLAN Group Information	v
Wireless Client List	v
Traffic Statistics	v
Events/Activities	CPU Loading/ Network Traffic / # of Clients
NMS Settings	
Setup Wizard	v
WLAN Group Settings	v
Access Point Group Settings	v
RADIUS Group Settings	v
Access Control	MAC
Guest Network	v
Locate AP	LED Blink / Buzzer / Reboot
Zone Plan	v
Auto Pilot	Auto Channel / Auto Power
Client Load Balancing	v
Firmware Upgrade	v
NMS Item	
Active AP	8
AP Group	8
WLAN	50
WLAN Group	8
RADIUS account	30
ACL number	256
Guest Network	1
Guest Network Group	8



Edimax Technology Co., Ltd.
No.3, Wu-Chuan 3rd Road, Wu-Gu,
New Taipei City 24891, Taiwan
Email: support@edimax.com.tw
Tel: +886-2-77396888

Edimax Technology Europe B.V.
Fijenhof 2, 5652 AE Eindhoven,
The Netherlands
Email: support@edimax.nl
Tel: +31-40 250 1200

Edimax Computer Company
3350 Scott Blvd., Bldg.15 Santa Clara, CA 95054, USA
Live Tech Support: 1(800) 652-6776
Email: support@edimax.com
Tel : +1-408-4961105

© Maximum performance, actual data rates, and coverage will vary depending on network conditions and environmental factors.
© Microsoft Windows XP/Vista/7/8/8.1 are registered trademarks of Microsoft Corporation. All other mentioned products are registered trademarks of their respective owners.